

Floor Plans of Ireo Uptown , Sector 66, Gurgaon

Tower A 2nd to 10th Floor Plans

TOWER A - 2ND TO 10TH FLOOR PLAN



Area Table	
Unit No.	Saleable Area Sq. Ft.
1	1132
2	1670
3	1225
4	1225
5	1670
6	1132



TOWER B, C, D & E - 2ND TO 7TH & 10TH TO 14TH FLOOR PLAN



Area Table	
Unit No.	Saleable Area Sq. Ft.
1	1421
2	2012
3	1815
4	1815
5	2012
6	1421





TOWER B, C, D & E - 8TH FLOOR PLAN

Unit No.	Saleable Area Sq. Ft.
1	1421
2	2012
3	1815
4	1815
5	3428
6	1430

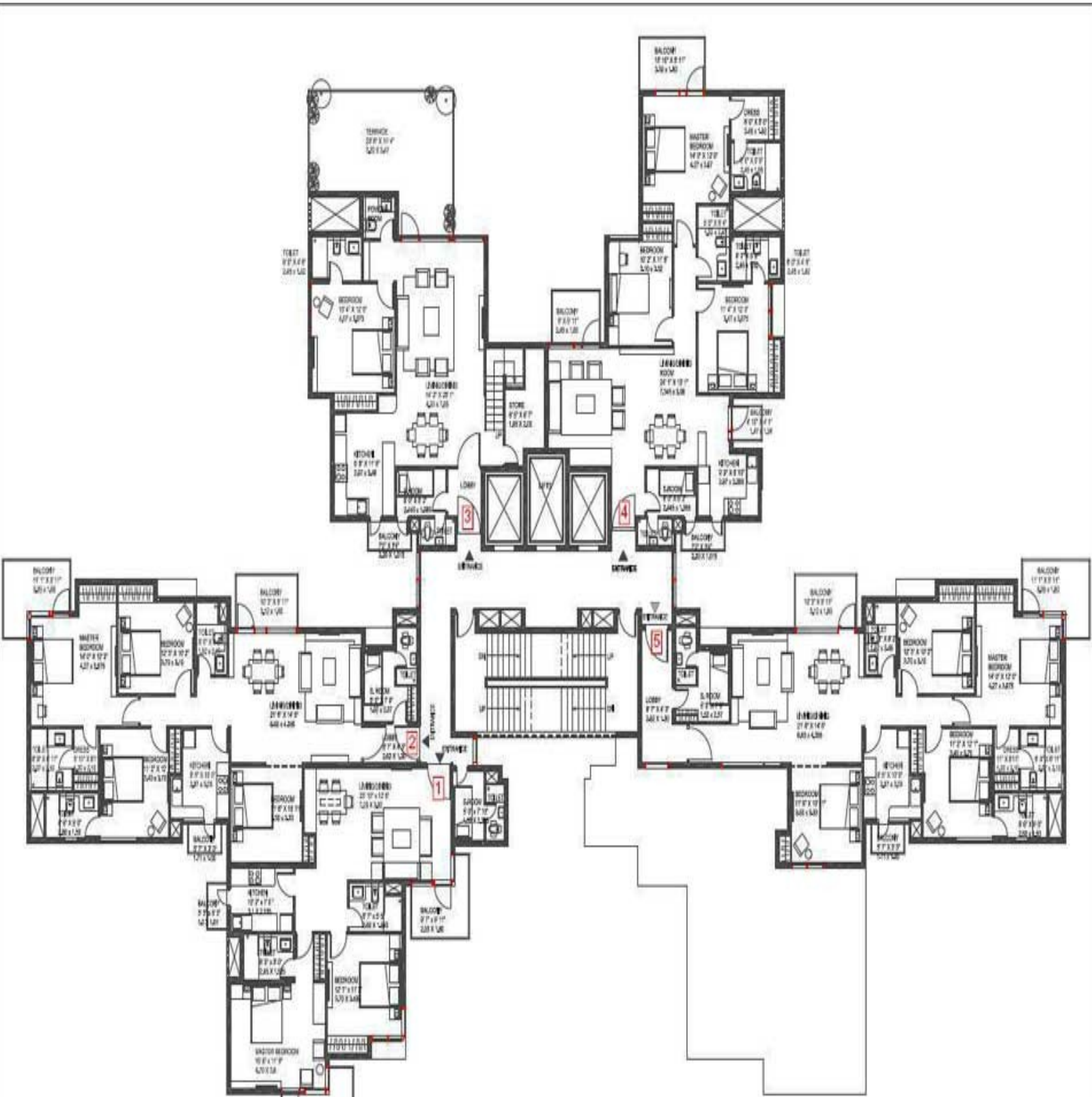




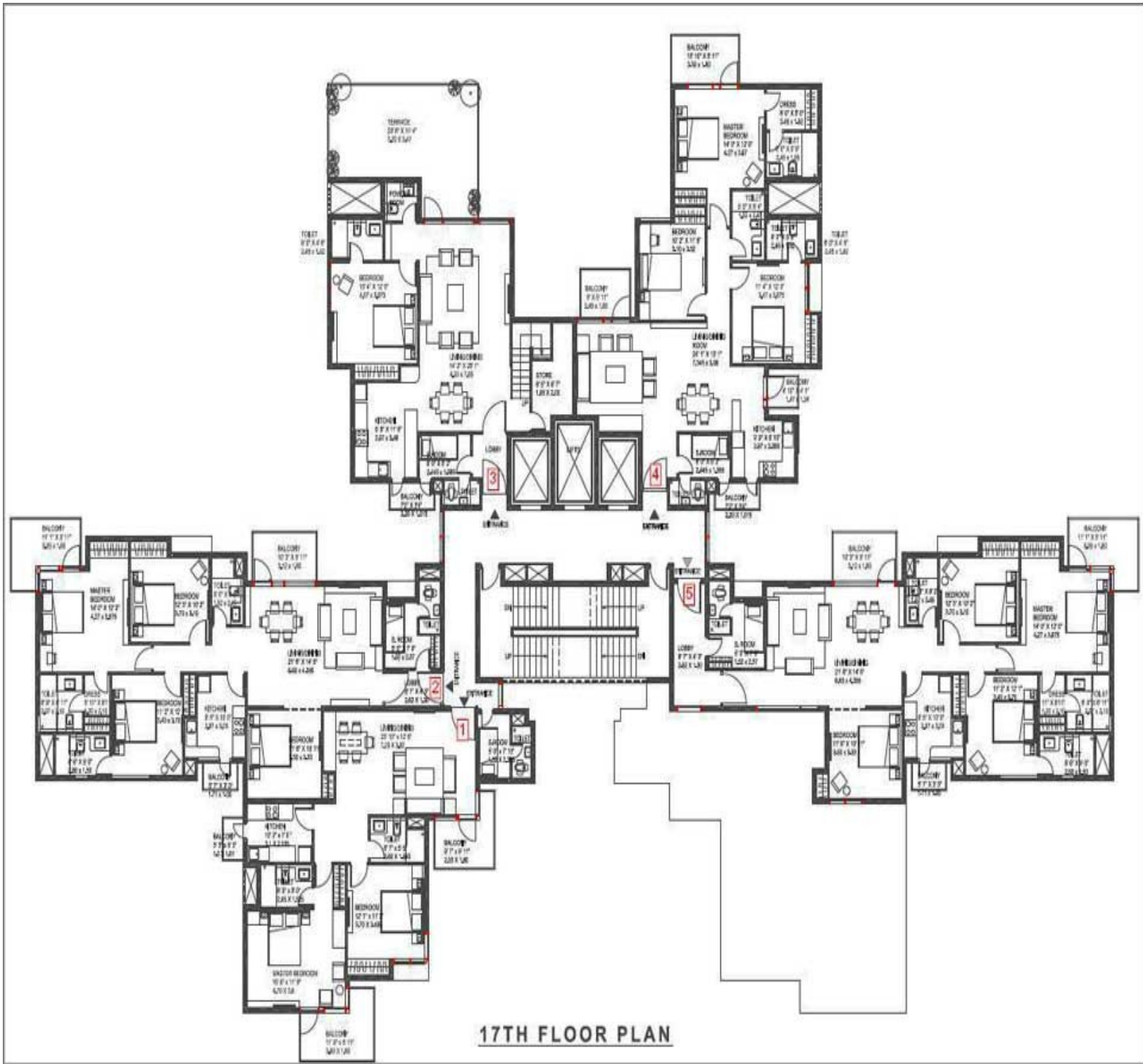
TOWER B, C, D & E - 9TH FLOOR PLAN

Area Table	
Unit No.	Saleable Area Sq. Ft.
1	1421
2	2012
3	1815
4	1815
5	1430

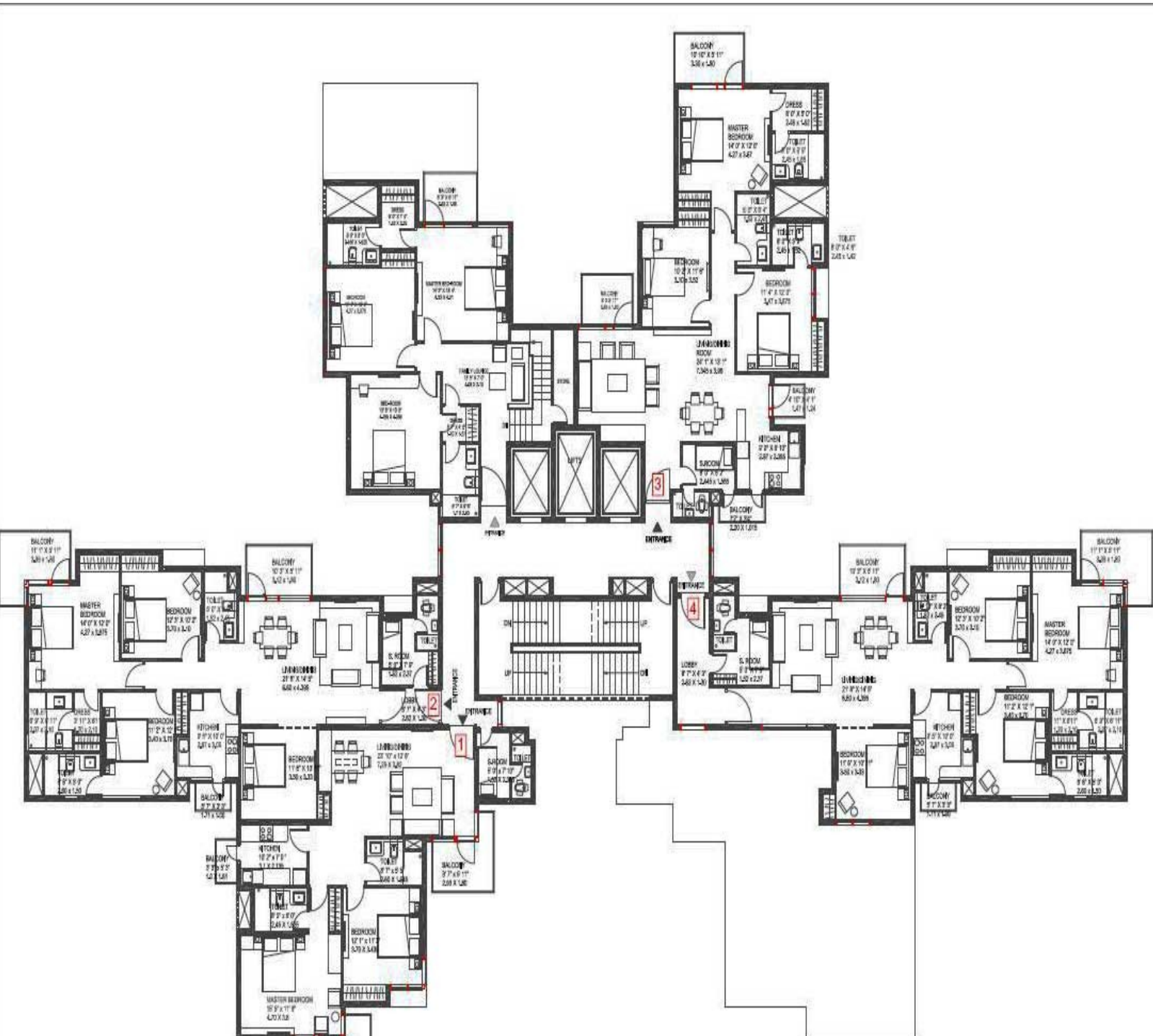




17TH FLOOR PLAN



17TH FLOOR PLAN



18TH FLOOR PLAN

Location Plan of Ireo Uptown, Sector 66, Gurgaon



Site Plan of Ireo Uptown , Sector 66, Gurgaon





Price List

Basic Price	As applicable
External Development Charges (EDC)	Rs. 319 per sq. ft.
Infrastructure Development Charges (IDC)	Rs. 30 per sq. ft.
Preferential Location Charges (PLC)	As applicable
Car parking (per bay) (See note 2)	Rs. 3,00,000 ; (01) Covered Rs. 5,00,000 ; (02) Covered (back to back) Rs. 3,00,000 ; Additional
Club Membership fee	As applicable
Replacement Fund-cum-Maintenance Security (RFMS)	Rs. 50 per sq. ft.
Booking Amount	10% of Basic Sale Price

PLC charges	
1 Single PLC	Rs. 200 per sq ft
2 Double PLC	Rs. 300 per sq ft
3 More than 2 PLC's	Rs. 400 per sq ft
PLC attributes	
A Floor	G,1,2,3, 15 & Above
B Green/Landscape/ Lawn	As applicable
D Club/Pool	As applicable

Note:

1. Prices prevailing at the time of receipt of application for booking shall be applicable.
2. Mandatory Car parking(s):
 - a. One bay for apartments
 - b. Two bays for Duplex
3. External Development Charges (EDC) and Infrastructure Development Charges (IDC) shall include interest and other incidental charges thereon as presently applicable, but does not include any future upward revision by the Haryana Government, which shall be payable at that time by the Applicant.

Payment Schedule

DOWN PAYMENT PLAN [7 ½ % rebate on Basic Sale Price + PLC + Parking]

S. No.	Linked Stages	Payment
1	At the time of booking	10 % of Basic Sale Price
2	Within 45 days of booking	85 % of Basic Sale Price + EDC + IDC + PLC + Car parking
3	On Receipt of Occupation Certificate	05 % of Basic Sale Price + RFMS + Stamp duty & Registration charges

CONSTRUCTION LINKED PAYMENT PLAN*

S. No.	Linked Stages	Payment
1	At the time of booking	10 % of Basic Sale Price
2	Within 45 days of booking	10 % of Basic Sale Price
3	On commencement of excavation	10 % of Basic Sale Price + 50% EDC + 50% IDC
4	On completion of Ground floor roof slab	7.5 % of Basic Sale Price + 30% EDC + 30% IDC
5	On completion of 3 rd floor roof slab	7.5 % of Basic Sale Price + 20% EDC + 20% IDC + 50% PLC
6	On completion of 8 th floor roof slab	7.5 % of Basic Sale Price + 50% PLC
7	On completion of 11 th floor roof slab	7.5 % of Basic Sale Price + 50% Car parking
8	On completion of 14 th floor roof slab	7.5 % of Basic Sale Price + 50% Car parking
9	On completion of 17 th floor roof slab	7.5 % of Basic Sale Price
10	On completion of top floor roof slab	7.5 % of Basic Sale Price
11	On completion of external plaster	7.5 % of Basic Sale Price
12	On completion of internal plaster	05 % of Basic Sales Price
13	On Receipt of Occupation Certificate	05 % of Basic Sale Price + RFMS + Stamp duty & Registration charges

* Stage for each installment shall pertain to stage for the respective Tower.

Notes:

1. External Development Charges (EDC) and Infrastructure Development Charges (IDC) shall include interest and other incidental charges thereon as presently applicable, but does not include any future upward revision by the Haryana Government, which shall be payable at that time by the Applicant.
2. Stamp Duty/registration charges shall be payable along with the last installment based on prevailing rates.
3. Prices subject to revision at the sole discretion of the company.
4. Third party charges including Govt. charges and taxes, if applicable, shall be extra.
5. Club membership fee, if applicable will be payable along with the last installment.

PROPOSED SPECIFICATIONS - IREO UPTOWN

AREAS	WALLS	FLOOR	CEILING
LIVING ROOM/ DINNING/ LOBBY/ STUDY	POP PUNNING WITH ACRYLIC EMULSION PAINT	VITRIFIED TILES	OIL BOUND DISTEMPER
MASTER BED ROOM	POP PUNNING WITH ACRYLIC EMULSION PAINT	LAMINATED WOODEN FLOORING	OIL BOUND DISTEMPER
OTHER BED ROOMS	POP PUNNING WITH ACRYLIC EMULSION PAINT	VITRIFIED TILES/ LAMINATED WOODEN FLOORING	OIL BOUND DISTEMPER
KITCHEN	TILES UPTO 2 FOOT ABOVE THE COUNTER AND OIL BOUND DISTEMPER IN THE BALANCE AREA	VITRIFIED TILES	OIL BOUND DISTEMPER
BALCONIES/ TERRACES	WEATHER PROOF PAINT	CERAMIC TILES	WEATHER PROOF PAINT
MASTER TOILET	VITRIFIED/ CERAMIC TILES	VITRIFIED/ PORCELAIN TILES	OIL BOUND DISTEMPER
OTHER TOILETS	CERAMIC TILES	PORCELAIN/ CERAMIC TILES	OIL BOUND DISTEMPER
UTILITY	OIL BOUND DISTEMPER	CERAMIC TILES	OIL BOUND DISTEMPER
UTILITY WC	CERAMIC TILES	CERAMIC TILES	OIL BOUND DISTEMPER

AREAS	DOORS	WINDOW/ GLAZING	OTHERS	SWITCHES
LIVING ROOM/ DINNING/ LOBBY/ STUDY	ENTRANCE DOOR: TIMBER VENEERED FLUSH DOOR	UPVC/ ANODISED/ POWDER COATED ALUMINUM WINDOWS AND FRAMES	VARIABLE REFRIGERANT FLOW TECHNOLOGY WITH HEATING AND COOLING	MODULAR SWITCHES
MASTER BED ROOM	INTERNAL DOOR: FLUSH DOOR EXTERNAL DOOR: UPVC/ POWDER COATED ALUMINUM DOORS	UPVC/ ANODISED/ POWDER COATED ALUMINUM WINDOWS AND FRAMES	VARIABLE REFRIGERANT FLOW TECHNOLOGY WITH HEATING AND COOLING	MODULAR SWITCHES
OTHER BED ROOMS	INTERNAL DOOR: FLUSH DOOR EXTERNAL DOOR: UPVC/ POWDER COATED ALUMINUM DOORS	UPVC/ ANODISED/ POWDER COATED ALUMINUM WINDOWS AND FRAMES	VARIABLE REFRIGERANT FLOW TECHNOLOGY WITH HEATING AND COOLING	MODULAR SWITCHES
KITCHEN	INTERNAL DOOR: FLUSH DOOR EXTERNAL DOOR: UPVC/ POWDER COATED ALUMINUM DOORS	UPVC/ ANODISED/ POWDER COATED ALUMINUM WINDOWS AND FRAMES	MODULAR KITCHEN WITH HOB AND CHIMNEY , GRANITE COUNTER TOP, STAINLESS STEEL SINK AND CP FITTINGS	MODULAR SWITCHES
BALCONIES/ TERRACES	UPVC/ POWDER COATED ALUMINIUM DOORS	UPVC/ ANODISED/ POWDER COATED ALUMINUM WINDOWS AND FRAMES		MODULAR SWITCHES
MASTER TOILET	INTERNAL DOOR: FLUSH DOOR SHUTTERS	UPVC/ ANODISED/ POWDER COATED ALUMINUM WINDOWS AND FRAMES		MODULAR SWITCHES
OTHER TOILETS	INTERNAL DOOR: FLUSH DOOR SHUTTERS	UPVC/ ANODISED/ POWDER COATED ALUMINUM WINDOWS AND FRAMES	CHINAWARE, CP FITTINGS, NATURAL STONE COUNTER	MODULAR SWITCHES
UTILITY	INTERNAL DOOR: FLUSH DOOR SHUTTERS	UPVC/ ANODISED/ POWDER COATED ALUMINUM WINDOWS AND FRAMES		MODULAR SWITCHES
UTILITY WC	INTERNAL DOOR: FLUSH DOOR SHUTTERS	UPVC/ ANODISED/ POWDER COATED ALUMINUM WINDOWS AND FRAMES	CHINAWARE AND CP FITTINGS	MODULAR SWITCHES
FACILITIES	<p>HIGH SPEED ELEVATORS, 100% POWER BACK-UP, TREATED WATER SUPPLY, PIPED GAS, ADEQUATE BASEMENT PARKING, LANDSCAPED AREAS WITH SITTING SPACE, PARTY LAWN WITH OUTDOOR BARBEQUE / DINING FACILITY, TENNIS COURT, PEDESTRIAN PATH, JOGGING TRAIL, KINDERGARTEN, CHILDREN'S CRECHE, SLIDES AND CLIMBING FRAMES</p> <p align="center">HIGH CEILING, SPECIAL WARDROBE SPACES</p> <p>CLUB EXPERIENCE: MULTI PURPOSE / PARTY ROOM, COFFEE BAR, OUTDOOR POOL SIDE CAFE, GYMNASIUM, INDOOR LOUNGE FOR READING / RELAXATION, SWIMMING POOL, JACUZZI, KIDS POOL, CHANGING ROOM WITH STEAM SHOWER, MASSAGE ROOMS, SNOOKER ROOM, TABLE TENNIS, SQUASH COURT, KIDS PLAY ROOM, VIDEO GAMES ROOM, MINI-THEATRE, MUSIC ROOM, DANCE/ YOGA ROOM</p>			
SECURITY	<p>CCTV IN BASEMENT AND MAIN ENTRANCE LOBBY FOR SURVEILLANCE, PERIMETER SECURITY AND INTELLIGENT ACCESS CONTROL SYSTEM</p>			

Disclaimer: All site plans, floor plans, areas, dimensions, specifications etc. are subject to change till final completion of the project. Soft furnishing, furniture and gadgets are not part of the offering. This does not constitute a legal offer. All images are an artistic conceptualization and do not purport to replicate the exact products. The Project is part funded by Axis Bank Limited (the 'Bank'). The Company will provide No Objection Certificate (NOC) / permission of the Bank for sale of flats/property, if required.